

1,451 - 9,005 SF Of Medical/Office Space

266 KING GEORGE ROAD, WARREN, NJ **For Lease**

HIGHLIGHTS:

Asking Rent: Negotiable

Building Size: 26,000 SF

Easy Highway Access: I-78, SR22

Built: 2010

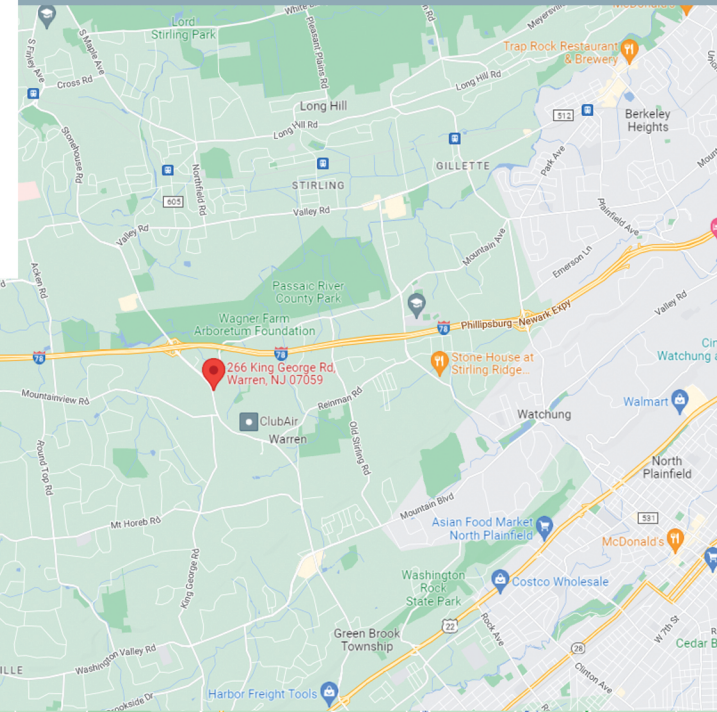
4.96/1000 SF

Car Charging Station

CONTACT:

Michael Wills | 908.591.1196

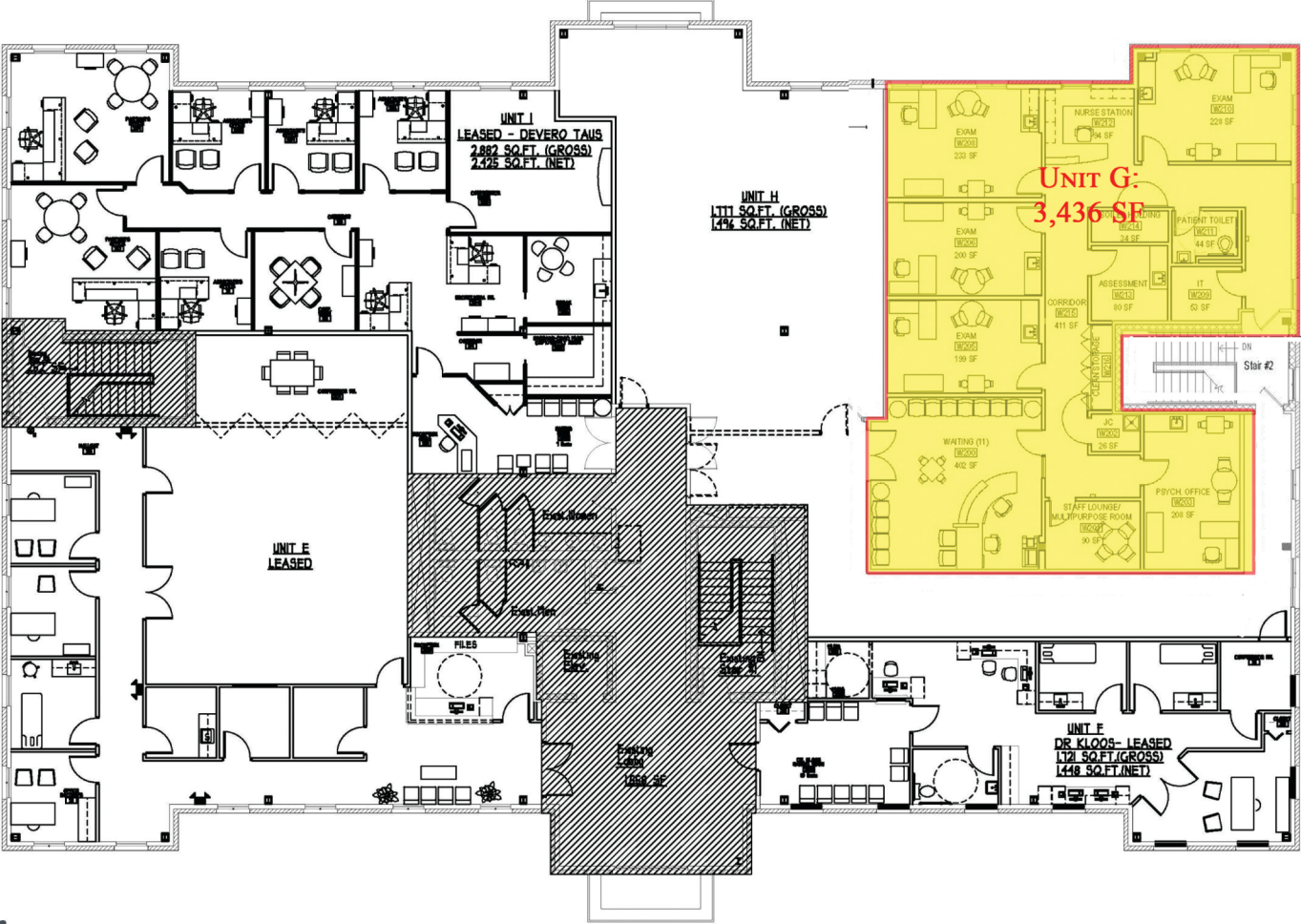
mwills@garibaldi.com



9,000 SF Of Medical/Office Space For Lease

266 KING GEORGE ROAD, WARREN, NJ

1ST FLOOR



9,000 SF Of Medical/Office Space For Lease

266 KING GEORGE ROAD, WARREN, NJ

2ND FLOOR

