

THE ABBEY | 355 Madison Ave., Morristown, NJ



APPROXIMATELY 22,000 SQUARE FEET FOR SALE



PROPERTY FEATURES

The Abbey is a signature property that has recently undergone exceptional renovations which are consistent with the building's classic style and architecture. It is one of the last mansions to remain in what was once known as Millionaire's Row in the heart of Morris County.

Approximately 22,000 RSF Building

- Lower Level: 5,333 RSF
- First Floor: 9,610 RSF
- Second Floor: 7,555 RSF

ASKING PRICE: \$6.2 Million



LOCATION

- 3 miles from Downtown Morristown which features; Restaurants, Shopping and Hotels
- Close proximity to I-287, RT 24 and RT 10
- Within minutes of Convent Train Station and NJ Transit Shuttle

PETER BLANCHARD
Principal
973-507-0363
blanchard@garibaldi.com

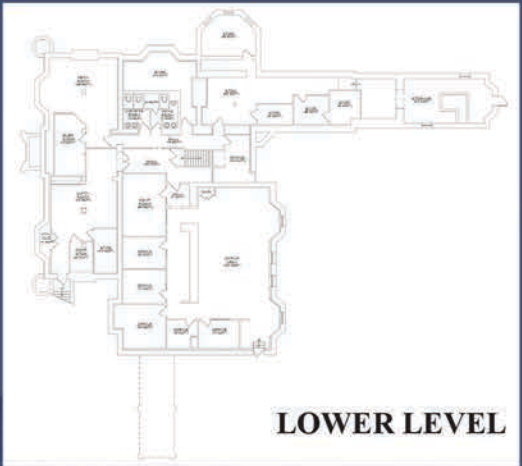
LEE BARNES
Vice President
973-507-0350
lbarnes@garibaldi.com

 **THE GARIBALDI GROUP**
CORFAC INTERNATIONAL
Global Real Estate Services

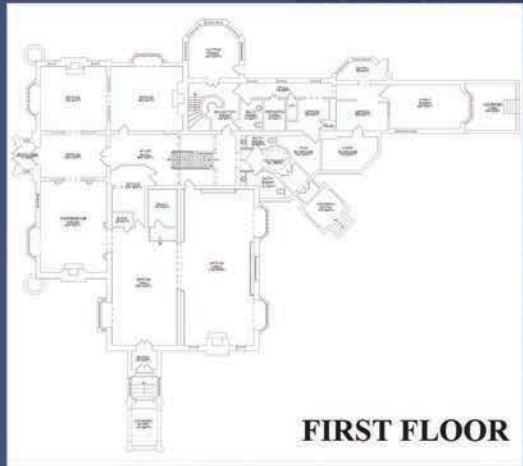
THE ABBEY | 355 Madison Ave., Morristown, NJ



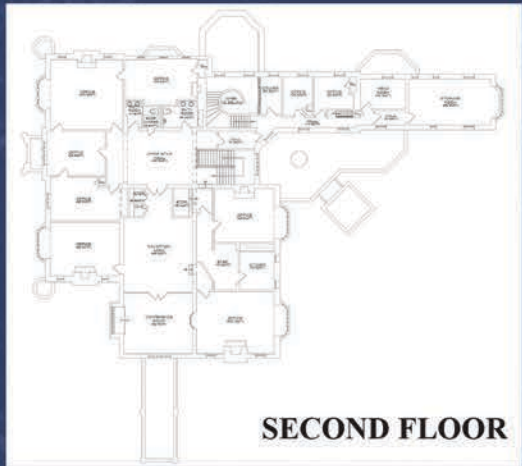
FLOOR PLAN:



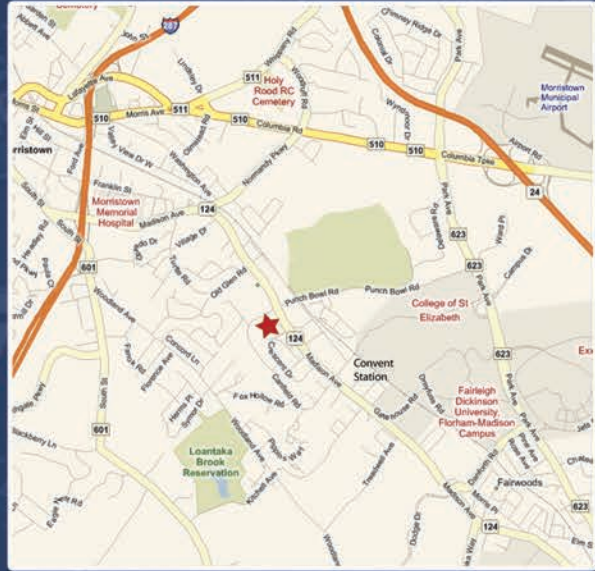
LOWER LEVEL



FIRST FLOOR



SECOND FLOOR



PETER BLANCHARD
Principal
973-507-0363
blanchard@garibaldi.com

LEE BARNES
Vice President
973-507-0350
lbarnes@garibaldi.com

